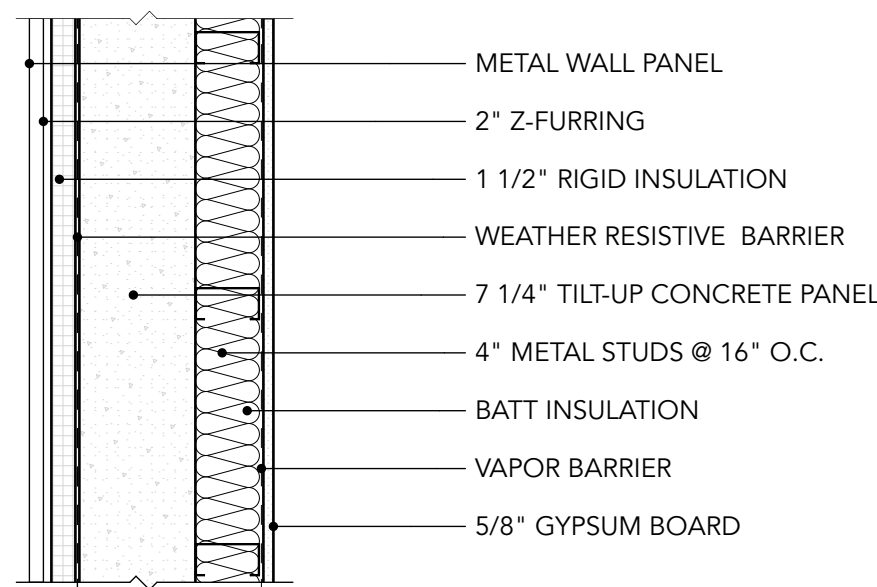
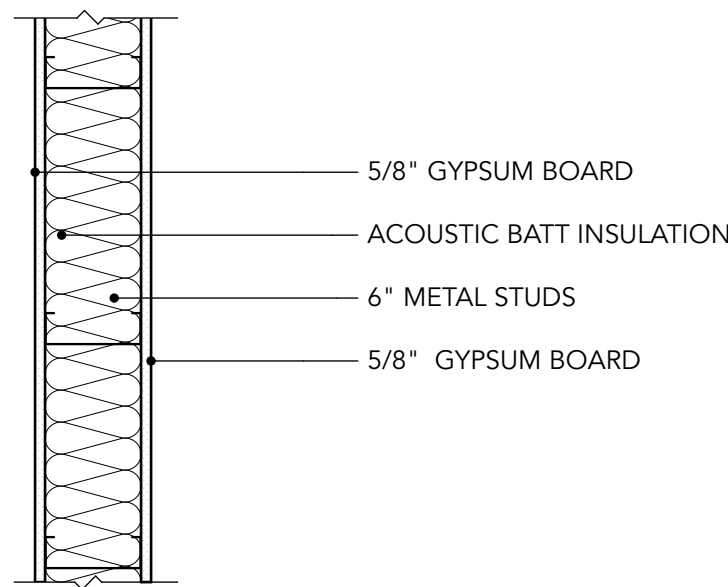


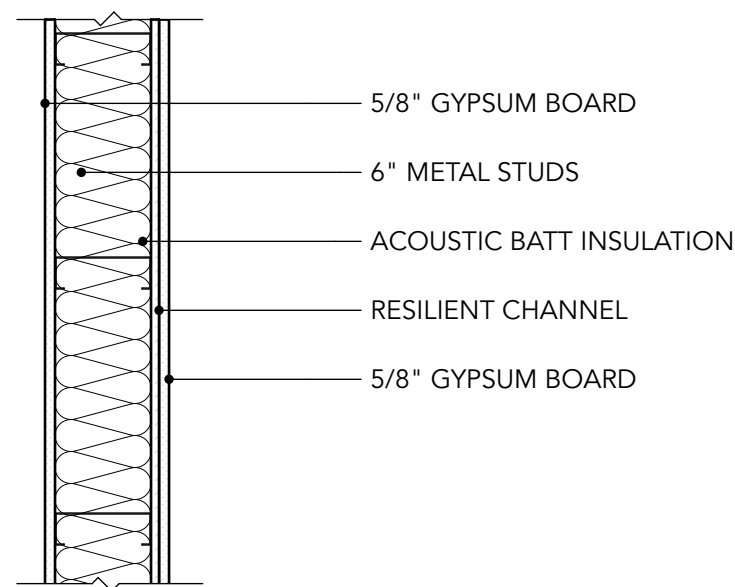
2 E3 - WALL TYPE  
SCALE: 1" = 1'-0"



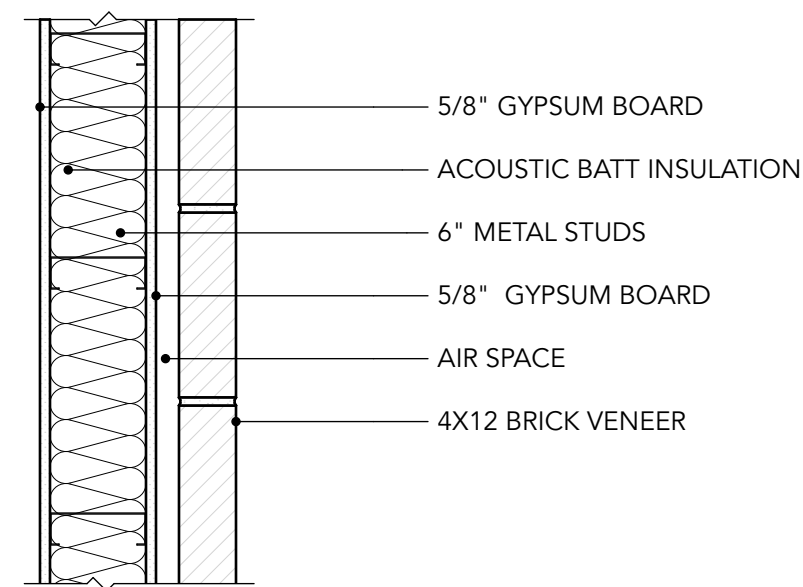
3 E9 - WALL TYPE  
SCALE: 1" = 1'-0"



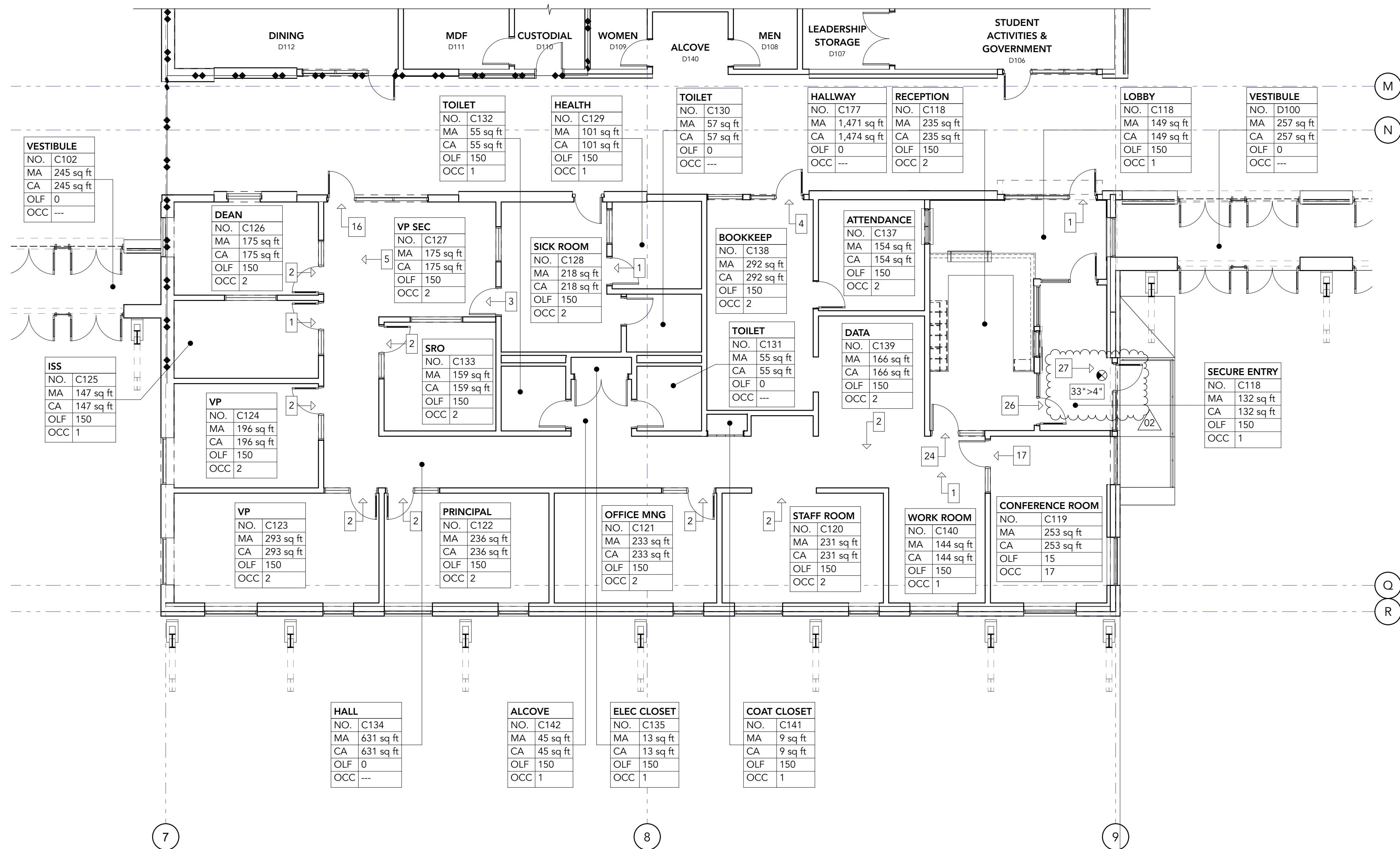
4 A2 - WALL TYPE  
SCALE: 1" = 1'-0"



5 A4 - WALL TYPE  
SCALE: 1" = 1'-0"



6 A49 - WALL TYPE  
SCALE: 1" = 1'-0"



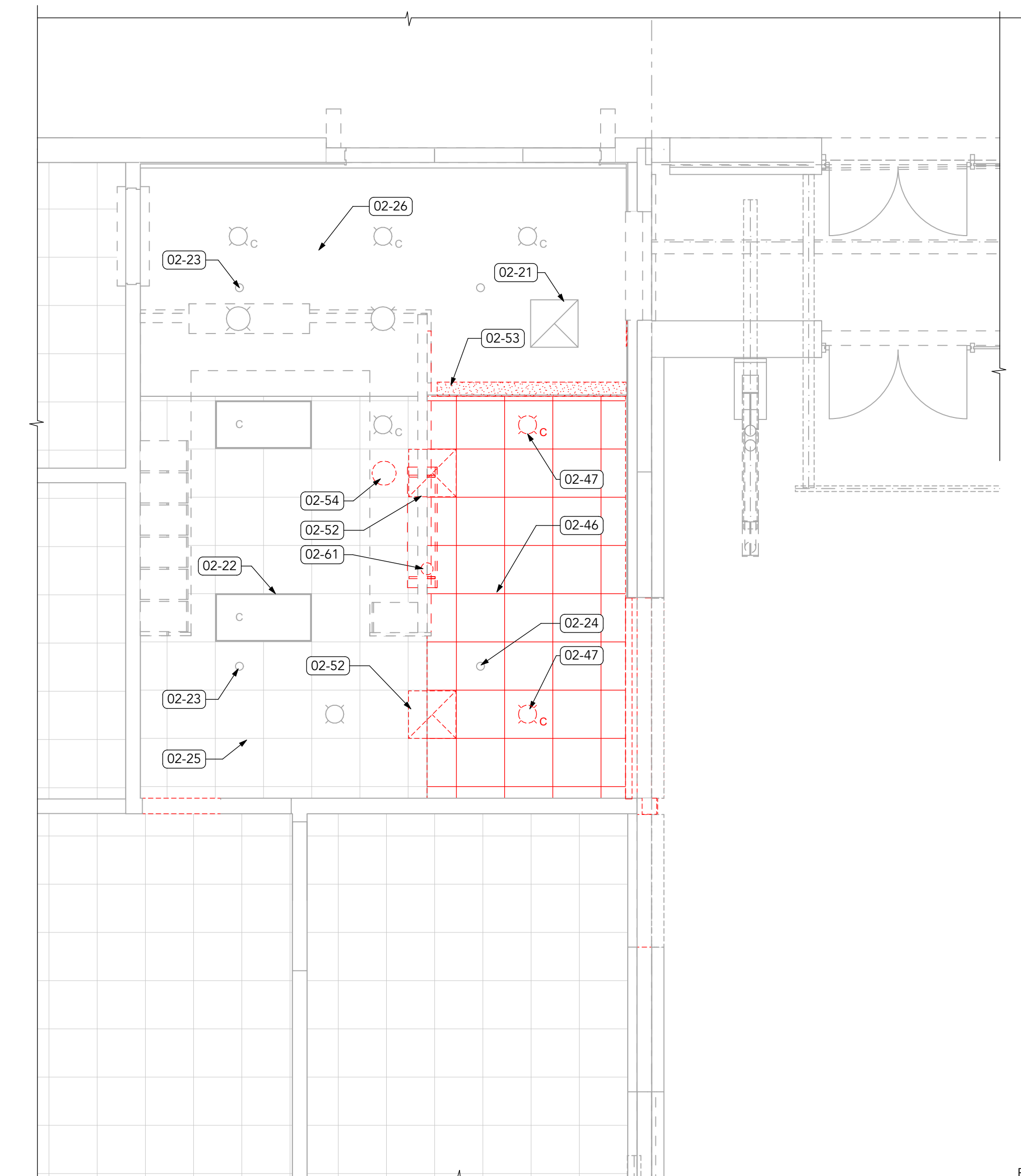
1 PARTIAL FIRST FLOOR CODE PLAN - SECTOR 'C'  
SCALE: 1/8" = 1'-0"

0 4' 8' 16'

CODE LEGEND	
	OCCUPANT LOAD
	"EXIT WIDTH" > "REQUIRED WIDTH"
	ILLUMINATED EXIT SIGN
	EGRESS DIRECTION
	FIRE EXTINGUISHER CABINET
	FIRE EXTINGUISHER
	TRAVEL DISTANCE/COMMON PATH/ACCESSIBLE ROUTE
	1-HR FIRE-RESISTANT RATED CONSTRUCTION
	2-HR FIRE-RESISTANT RATED CONSTRUCTION
	3-HR FIRE-RESISTANT RATED CONSTRUCTION
	4-HR FIRE-RESISTANT RATED CONSTRUCTION

ROOM TAGS	
	ROOM NUMBER
	MEASURED AREA
	CALCULATED AREA (NET OR GROSS)
	OCCUPANT LOAD FACTOR
	NO. OF OCCUPANTS
	AREA REDUCED FOR NET CALCULATED AREA
	MANUVERING CLEARANCE

DRAWN:	#
CHECKED:	#
PRINT DATE:	01.30.2026
ISSUANCE LOG:	
00	1/5/26
PERMIT SET	
01	1/27/26
REVISION 01/ADDENDUM 01	
02	1/30/26
REVISION 02 / ADDENDUM 02	

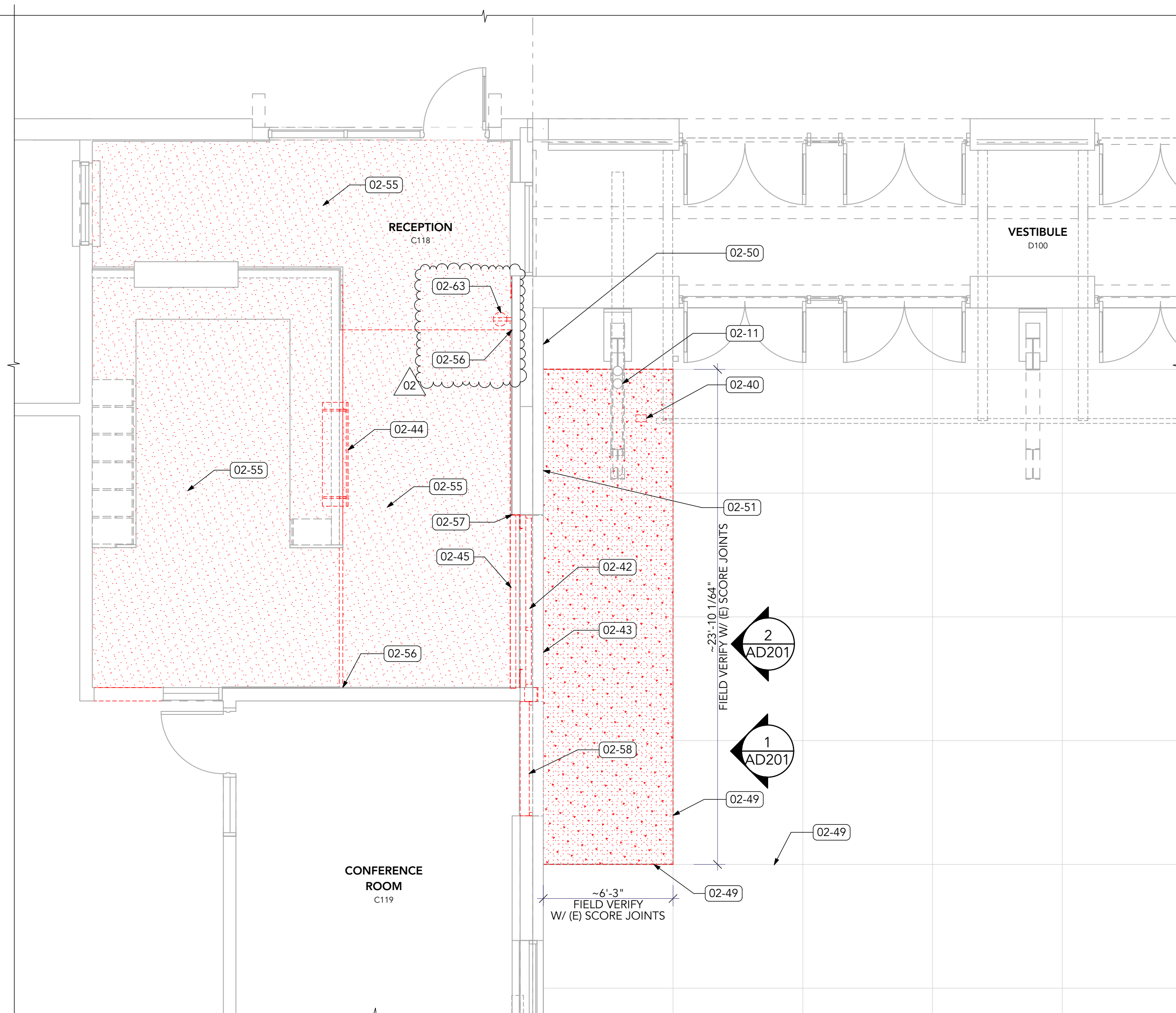


2  
AD101

## FIRST FLOOR DEMO RCP

SCALE: 1/4" = 1'-0"

PROJECT NORTH



1  
AD101

## FIRST FLOOR DEMO PLAN

SCALE: 1/4" = 1'-0"

PROJECT NORTH



### KEYNOTES

#### 02 EXISTING CONDITIONS

- 02-11 (E) DOWNSPOUT & CLEANOUT TO REMAIN
- 02-21 (E) RETURN AIR GRILLE
- 02-22 (E) LIGHT FIXTURE TO REMAIN
- 02-23 (E) SPRINKLER HEAD TO REMAIN
- 02-24 (E) SPRINKLER HEAD TO REMAIN. COORDINATE NEW CEILING WORK AROUND (E) HEAD. PROVIDE NEW TRIM AS REQUIRED.
- 02-25 (E) ACOUSTIC CEILING SYSTEM TO REMAIN
- 02-26 (E) GYPSUM CEILING TO REMAIN
- 02-40 (E) STEEL POST TO BE REMOVED. SALVAGE COMMUNICATION, PATHWAYS, DEVICES AND WIRING FOR RE-INSTALLATION ON NEW POST TO MATCH EXISTING.
- 02-42 REMOVE (E) ALUMINUM STOREFRONT WINDOW SYSTEM
- 02-43 REMOVE (E) BRICK VENEER, Z-FURRING & RIGID INSULATION AT LOCATION OF ENLARGED OPENING IN TILT-UP CONCRETE PANEL. SALVAGE (E) BRICK FOR REINSTALLATION AT NEW VENEER CORNERS WHERE POSSIBLE.
- 02-44 REMOVE PORTION OF (E) RECEPTION DESK. COORDINATE EXTENT W/ NEW WALL
- 02-45 REMOVE (E) FURRED WALL BELOW WINDOW
- 02-46 REMOVE PORTION OF (E) ACOUSTIC CEILING
- 02-47 REMOVE (E) LIGHTING & SALVAGE FOR RE-USE
- 02-49 REMOVE (E) CONCRETE FLATWORK @ (E) SCORE OR CONSTRUCTION JOINTS
- 02-50 (E) KNOX BOX LOCATION. RELOCATE TO MORE CONSPICUOUS LOCATION. COORDINATE W/ FIRE DEPARTMENT
- 02-51 REMOVE (E) DISPLAY CASE & COMMUNICATION DEVICES - SALVAGE TO OWNER
- 02-52 (E) HVAC SUPPLY DIFFUSER TO BE RELOCATED
- 02-53 REMOVE PORTION OF (E) GYPSUM CEILING
- 02-54 (E) SPEAKER TO BE RELOCATED
- 02-55 (E) CARPET TILE TO BE REMOVED
- 02-56 REMOVE (E) WALL COVERING & GYPSUM BD AT LOCATION OF NEW WALL
- 02-57 REMOVE (E) WALL COVERING, GYPSUM BD AND FRAMING AT LOCATION OF ENLARGED OPENING
- 02-58 REMOVE (E) WINDOW, SALVAGE AND REINSTALL W/ NEW WORK
- 02-61 SALVAGE (E) SENSOR FOR REINSTALLATION
- 02-63 (E) ELECTRICAL OUTLET TO BE RELOCATED

### WALL LEGEND

- EXISTING WALL TO REMAIN
- EXISTING WALL TO BE DEMOLISHED
- NEW WALL

REDMOND SCHOOL DISTRICT  
RIDGEVIEW HIGH SCHOOL  
SECURE ENTRY PROJECT  
4555 SW ELKHORN AVE.  
REDMOND, OR 97756

DRAWN:

#

CHECKED:

#

PRINT DATE: 01.30.2026

#### ISSUANCE LOG:

00	PERMIT SET	1/5/26
01	REVISION 01/ADDENDUM 01	1/27/26
02	REVISION 02 / ADDENDUM 02	1/30/26

SHEET:

FIRST FLOOR DEMO  
PLANS

# AD101





MEP PLAN NOTES

THE MECHANICAL, ELECTRICAL AND PLUMBING DRAWINGS SHOWN ARE DIAGRAMMATIC IN NATURE AND INTENDED TO CONVEY GENERAL SCOPE AND DESIGN INTENT FOR THE PURPOSES OF BIDDING. THE CONTRACTOR AND DESIGN/BUILD SUBCONTRACTOR SHALL BE RESPONSIBLE FOR THE COMPLETE DESIGN, CODE COMPLIANCE, COORDINATION AND PROPER FUNCTION OF ALL MECHANICAL, ELECTRICAL AND PLUMBING SYSTEM WHETHER OR NOT FULLY SHOWN.



Drawings and Specifications as instruments of service are and shall remain the property of the Architect. They are not to be used on extensions of the project, or other projects, except by agreement in writing and appropriate compensation to the Architect.

The General Contractor is responsible for confirming and correlating dimensions at the job site. The Architect will not be responsible for construction means, methods, techniques, sequences, or procedures, or for safety precautions and programs in connection with the project.

© 2025 RHIZO Architecture

REDMOND SCHOOL DISTRICT  
RIDGEVIEW HIGH SCHOOL  
SECURE ENTRY PROJECT  
4555 SW ELKHORN AVE.  
REDMOND, OR 97756

DRAWN:

#

CHECKED:

#

PRINT DATE: 01.30.2026

ISSUANCE LOG:

00 1/5/26  
PERMIT SET

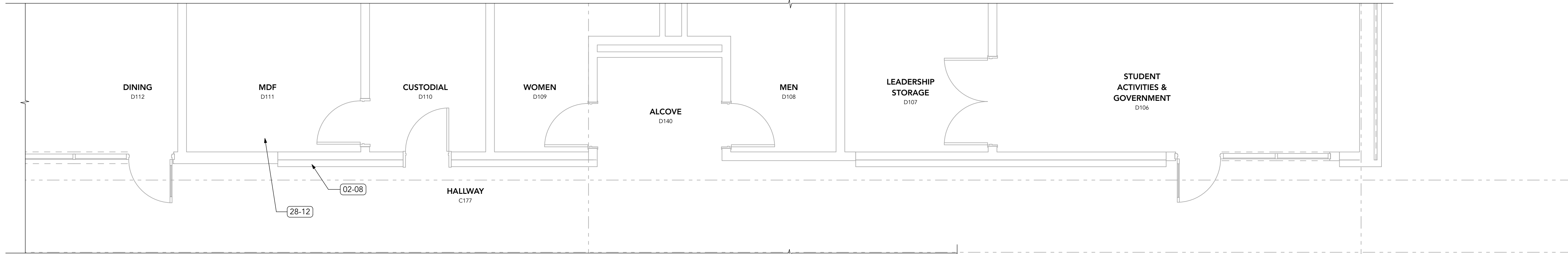
01 1/27/26  
REVISION 01/ADDENDUM 01

02 1/30/26  
REVISION 02 / ADDENDUM 02

SHEET:

DIAGRAMMATIC MEP  
PLANS

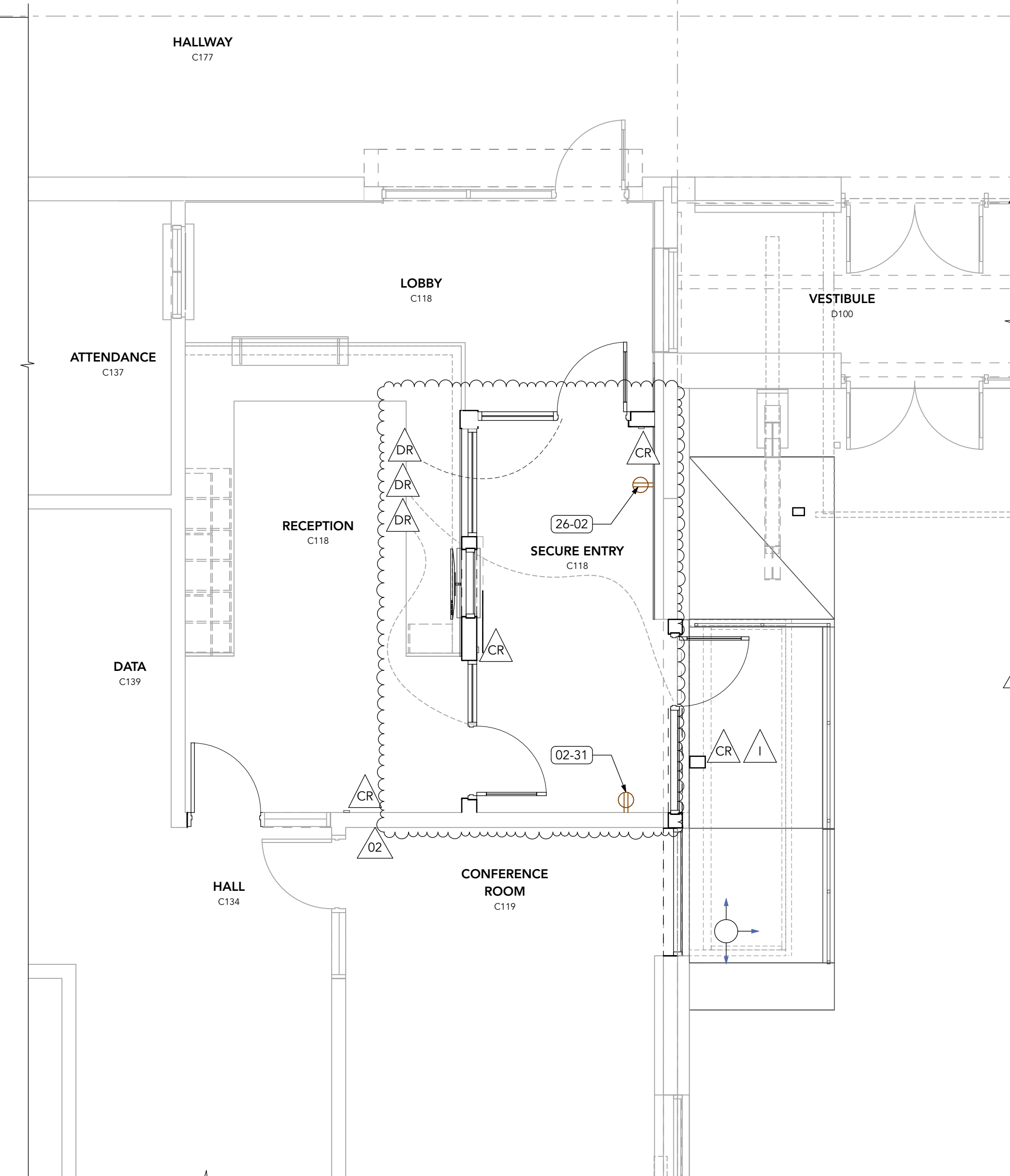
A-111



2  
A-111

DIAGRAMMATIC MECHANICAL PLAN

SCALE: 1/4" = 1'-0"



1  
A-111

FIRST FLOOR COMMUNICATIONS PLAN

SCALE: 1/4" = 1'-0"

PROJECT NORTH



KEYNOTES

02 EXISTING CONDITIONS

02-08 (E) TWO HOUR FIRE-RESISTANT RATED CONSTRUCTION. PROVIDE FIRESTOPPING AT ALL PENETRATIONS AS REQUIRED.

02-31 (E) ELECTRICAL OUTLET TO REMAIN

22 PLUMBING

22-11 (E) ROOF DRAIN PIPING. FIELD VERIFY LOCATION

22-12 (N) ROOF DRAIN PIPING TO CONNECT W/ EXISTING. COMPLY W/ ALL CODES AND REGULATIONS FOR SLOPE AND CLEAN OUT.

23 HVAC

23-31 RELOCATE SUPPLY DIFFUSER TO (E) LAY-IN CEILING

23-32 (N) SUPPLY DIFFUSER IN SECURE ENTRY VESTIBULE. CONTRACTOR TO ASSESS EXISTING HVAC SYSTEM CAPACITY, DISTRIBUTION LAYOUT AND PROXIMITY OF DUCT RUNS SERVING THE AREA FOR CODE COMPLIANT VENTILATION WITHIN THE NEW VESTIBULE.

23-33 (N) RETURN DIFFUSER IN SECURE ENTRY VESTIBULE. CONTRACTOR TO ASSESS EXISTING HVAC SYSTEM CAPACITY, DISTRIBUTION LAYOUT AND PROXIMITY OF DUCT RUNS SERVING THE AREA FOR CODE COMPLIANT VENTILATION WITHIN THE NEW VESTIBULE.

26 ELECTRICAL

26-02 RELOCATED ELECTRICAL OUTLET

28 ELECTRONIC SAFETY & SECURITY

28-12 DOOR ACCESS CONTROL PANEL LOCATED IN THIS ROOM



Drawings and Specifications as instruments of service are and shall remain the property of the Architect. They are not to be used on extensions of the project, or other projects, except by agreement in writing and appropriate compensation to the Architect.

The General Contractor is responsible for confirming and correlating dimensions at the job site. The Architect will not be responsible for construction means, methods, techniques, sequences, or procedures, or for safety precautions and programs in connection with the project.

© 2025 RHIZO Architecture

DRAWN:

#

CHECKED:

#

PRINT DATE: 01.30.2026

ISSUANCE LOG:

00 1/5/26  
PERMIT SET

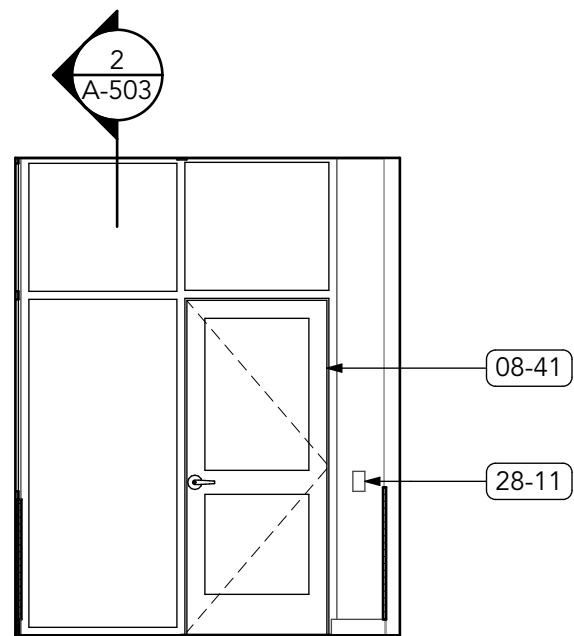
01 1/27/26  
REVISION 01/ADDENDUM 01

02 1/30/26  
REVISION 02 / ADDENDUM 02

SHEET:

INTERIOR ELEVATIONS

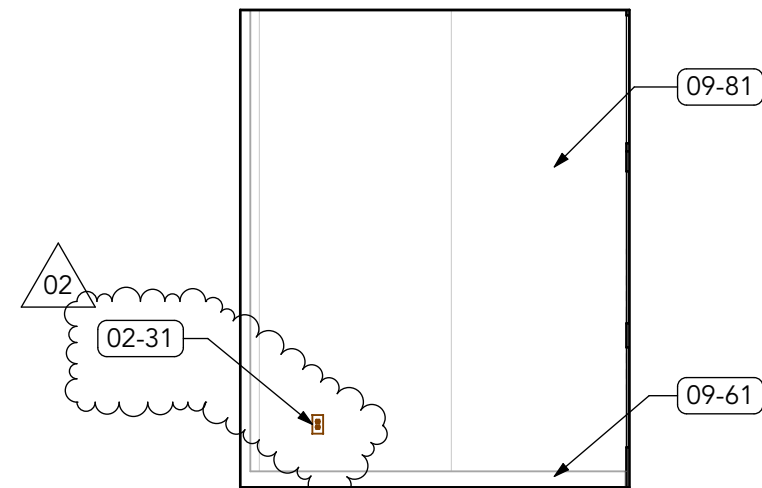
A-411



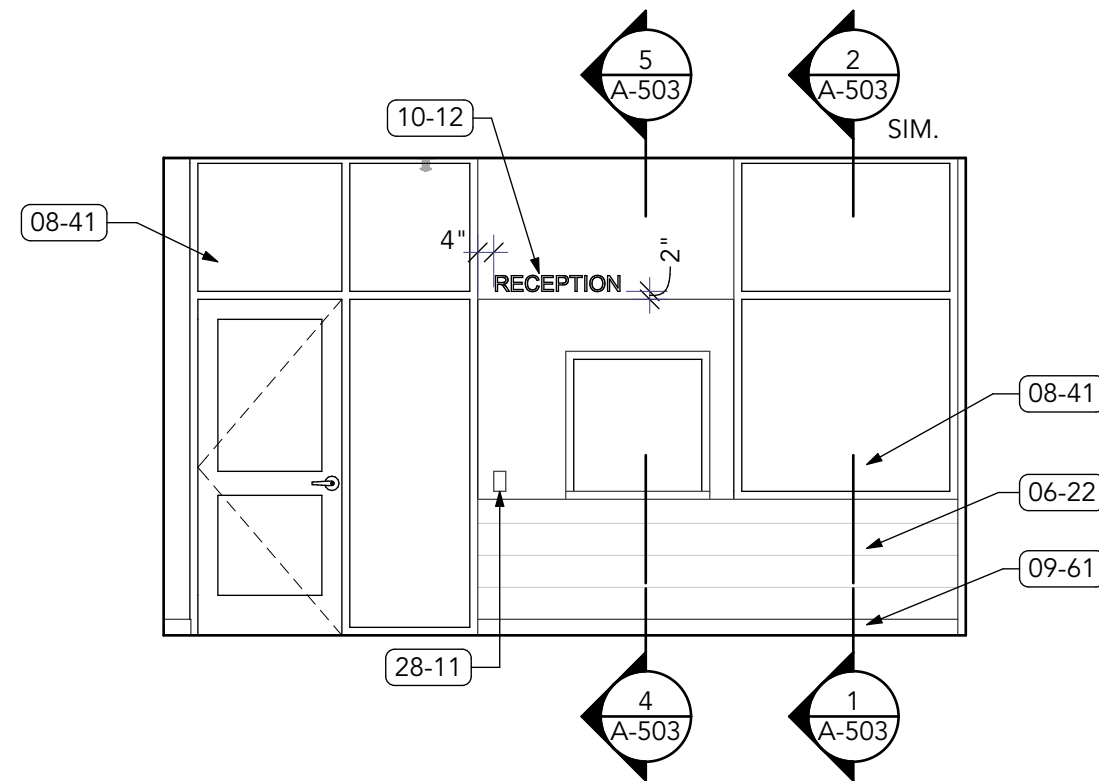
1  
A-411  
SECURE ENTRY North  
SCALE: 1/4" = 1'-0"



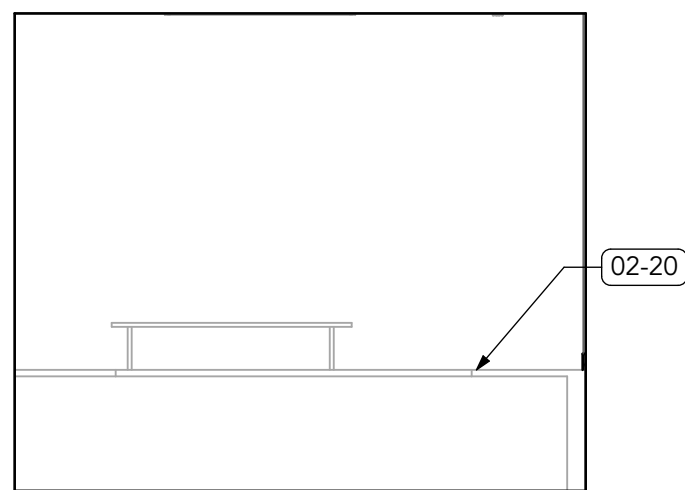
2  
A-411  
SECURE ENTRY East  
SCALE: 1/4" = 1'-0"



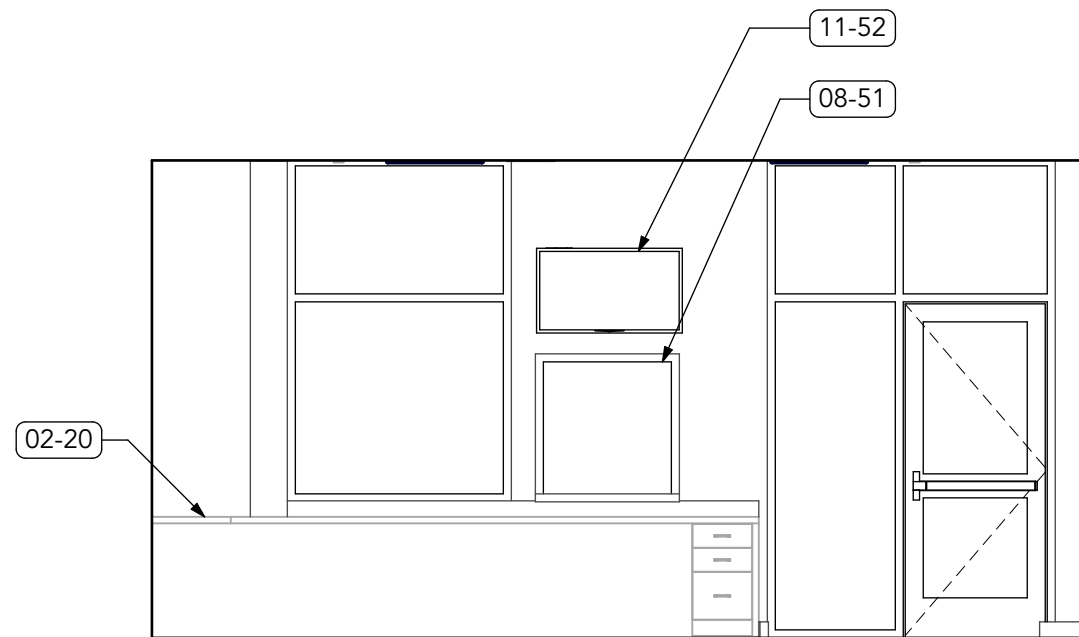
3  
A-411  
SECURE ENTRY South  
SCALE: 1/4" = 1'-0"



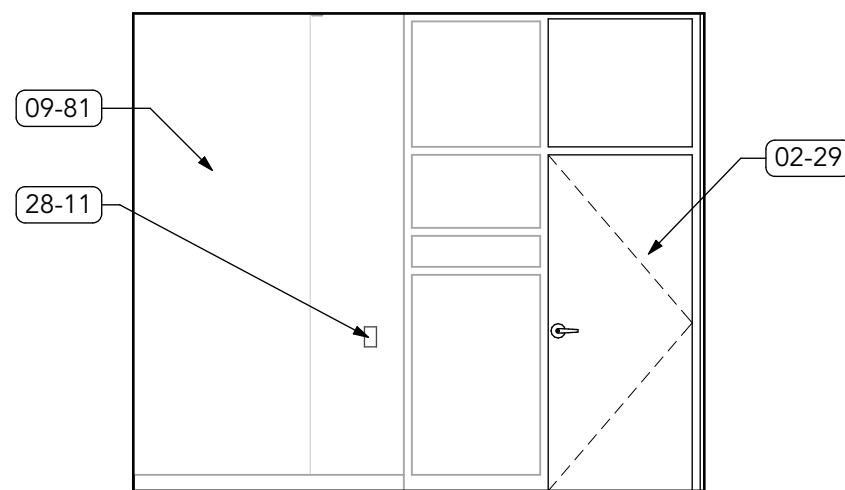
4  
A-411  
SECURE ENTRY West  
SCALE: 1/4" = 1'-0"



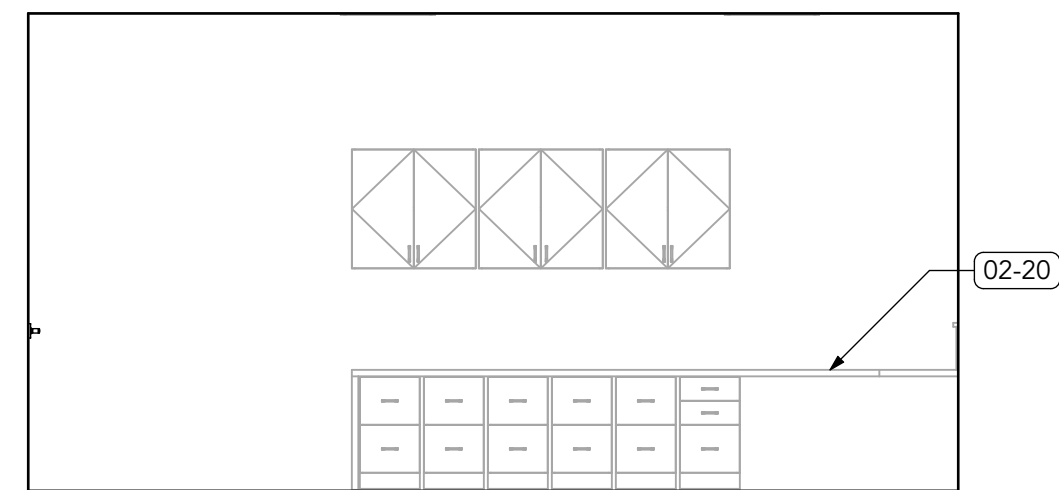
5  
A-411  
RECEPTION North  
SCALE: 1/4" = 1'-0"



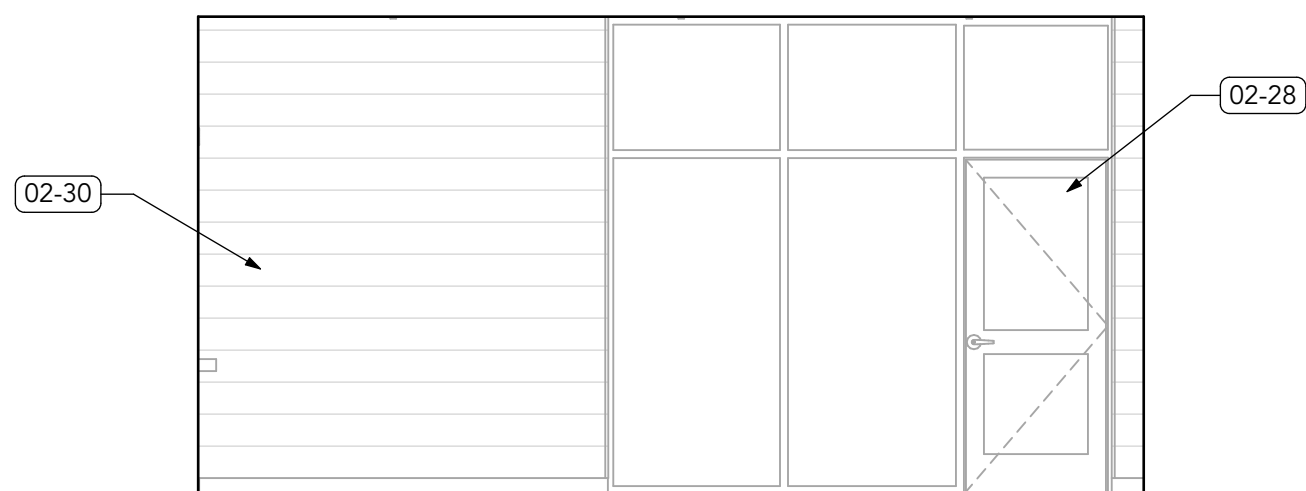
6  
A-411  
RECEPTION East  
SCALE: 1/4" = 1'-0"



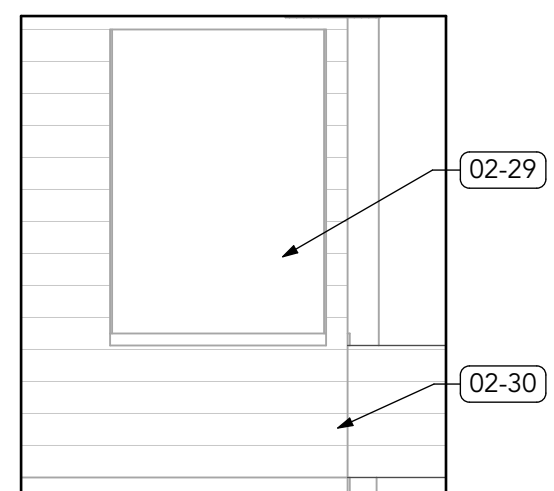
7  
A-411  
RECEPTION South  
SCALE: 1/4" = 1'-0"



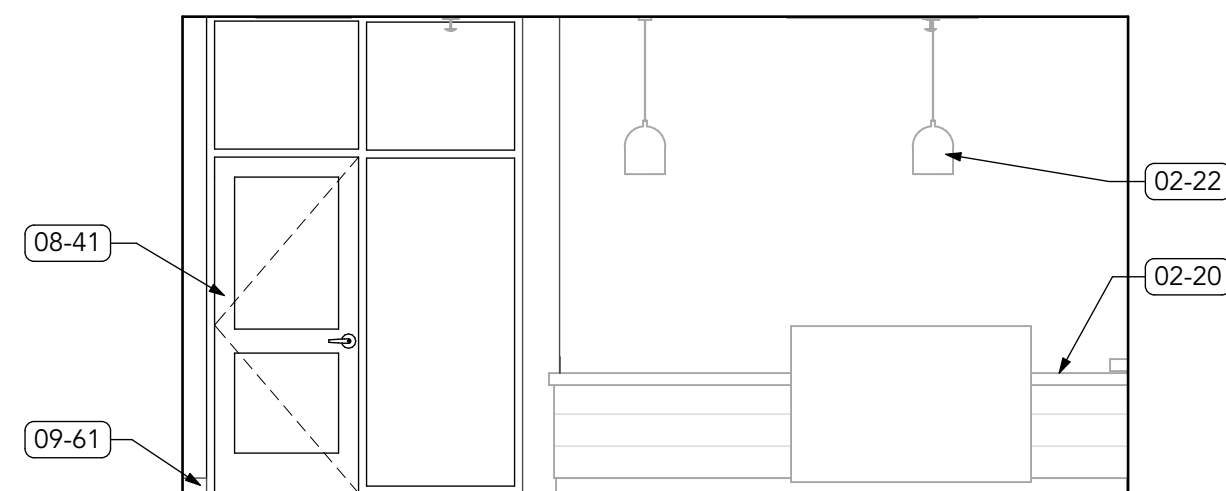
8  
A-411  
RECEPTION West  
SCALE: 1/4" = 1'-0"



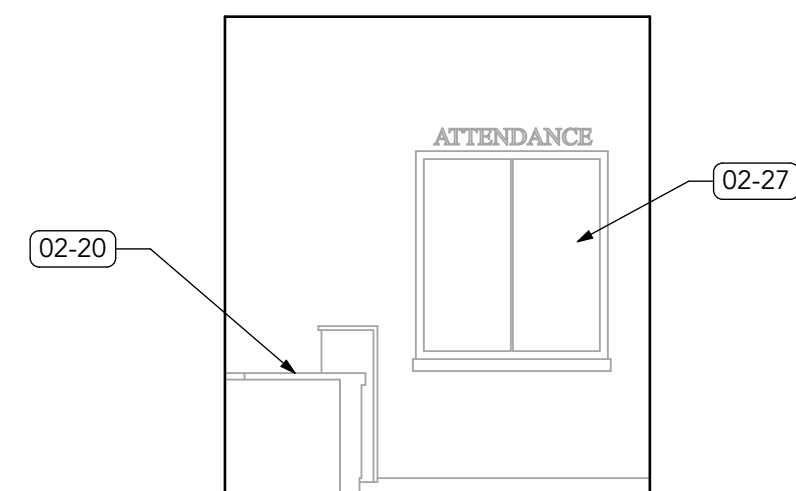
9  
A-411  
LOBBY North  
SCALE: 1/4" = 1'-0"



10  
A-411  
LOBBY East  
SCALE: 1/4" = 1'-0"



11  
A-411  
LOBBY South  
SCALE: 1/4" = 1'-0"



12  
A-411  
LOBBY West  
SCALE: 1/4" = 1'-0"

#### KEYNOTES

##### 02 EXISTING CONDITIONS

- 02-20 (E) RECEPTION DESK TO BE MODIFIED - SEE DETAILS
- 02-22 (E) LIGHT FIXTURE TO REMAIN
- 02-27 (E) WINDOW TO REMAIN
- 02-28 (E) ALUMINUM STOREFRONT TO REMAIN
- 02-29 (E) OPENING TO REMAIN
- 02-30 (E) WOOD WALL COVERING TO REMAIN
- 02-31 (E) ELECTRICAL OUTLET TO REMAIN

##### 06 WOOD, PLASTICS & COMP

- 06-21 (E) WOOD WALL COVERING TO BE REMOVED, REMODIFIED & REINSTALLED
- 06-22 (N) WOOD WALL COVERING TO MATCH EXISTING

##### 08 OPENINGS

- 08-41 (N) ALUMINUM STOREFRONT SYSTEM
- 08-51 (N) SPEAK-THRU TRANSACTION WINDOW

##### 09 FINISHES

- 09-61 (N) WALL BASE
- 09-81 (E) ACOUSTIC PANEL TO BE REMOVED, MODIFIED AND REINSTALLED

##### 10 SPECIALTIES

- 10-12 (N) CAST LETTERS

##### 11 EQUIPMENT

- 11-52 LOCATION OF DISPLAY BY OWNER, PROVIDE POWER AND DATA CONNECTIONS.

##### 26 ELECTRICAL

- 26-02 RELOCATED ELECTRICAL OUTLET

##### 28 ELECTRONIC SAFETY & SECURITY

- 28-11 (N) ACCESS CONTROL DEVICE



